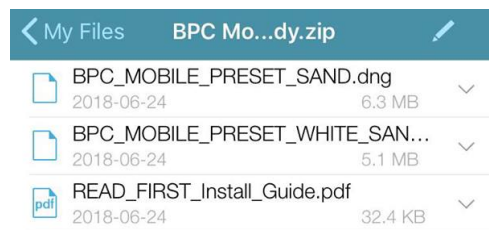


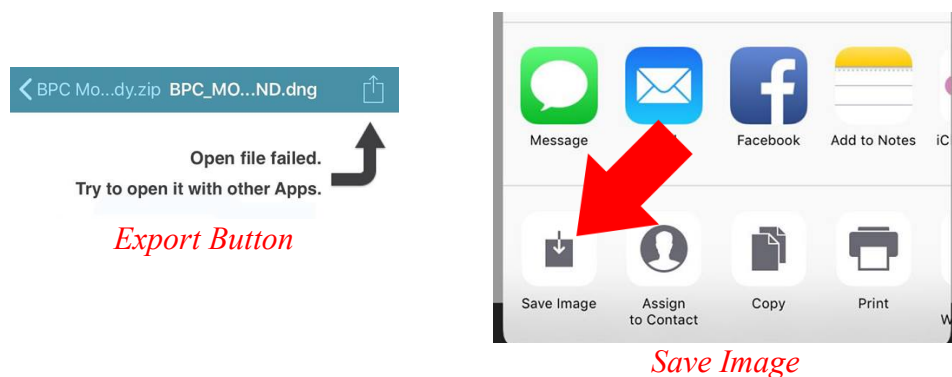
Bethany Poteet Creative
Mobile Preset Pack Install Guide

STEP 1



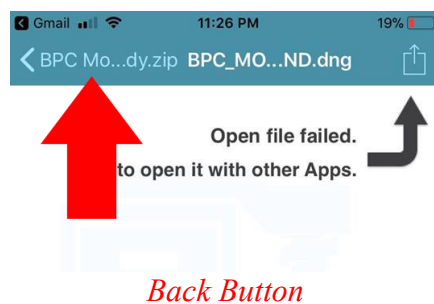
First Screen

- On this screen, tap the name of the first preset.
- In the top right corner of the screen, tap the 'Export' button and select 'Save Image'.



Save Image

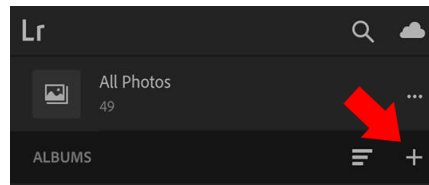
- Go back by tapping the 'Back' button in the top left of the screen and repeat these steps for the second preset.



Back Button

STEP 2

- Close out of the app and open Lightroom Mobile.
- Create a new Album by tapping the '+' button.



'+' Button to create new Album

- Tap the three dots to the right of the Album you just created and select 'Add Photos' and then select 'Camera Roll'
- Select the two photos you just saved – these are the presets. They will appear blank, but that is okay. They won't be blank once they are added.
- After they are finished loading, select the Album you created and you should see the 2 presets and their names.

STEP 3

- To add these custom presets to the Preset tool, first select one of the presets.
- Tap the three dots in the top right corner of the screen. Then select “Create Preset”.
- Under 'Preset Name', type the name of the preset you have selected.
- Under 'Preset Group', be sure that 'User Presets' is selected.
- All of the necessary check boxes should be selected, so you shouldn't need to do anything with those. Now tap the check mark in the top right corner.
- Do this for the remaining presets and now you can access them more quickly!
- To apply the presets to a photo, go to the photo you want to edit.
- On the bottom tool bar, scroll to the far right and select the 'Presets' tool.
- At the top of the popup menu, make sure 'User Presets' is selected. Your presets should now be visible.
- Select the preset you would like to use and tap the check mark.
- Now you can make adjustments as you wish!

STEP 4

- To save your photo to your Camera Roll, tap the 'Export' button at the top of the screen and select 'Save to Camera Roll'.